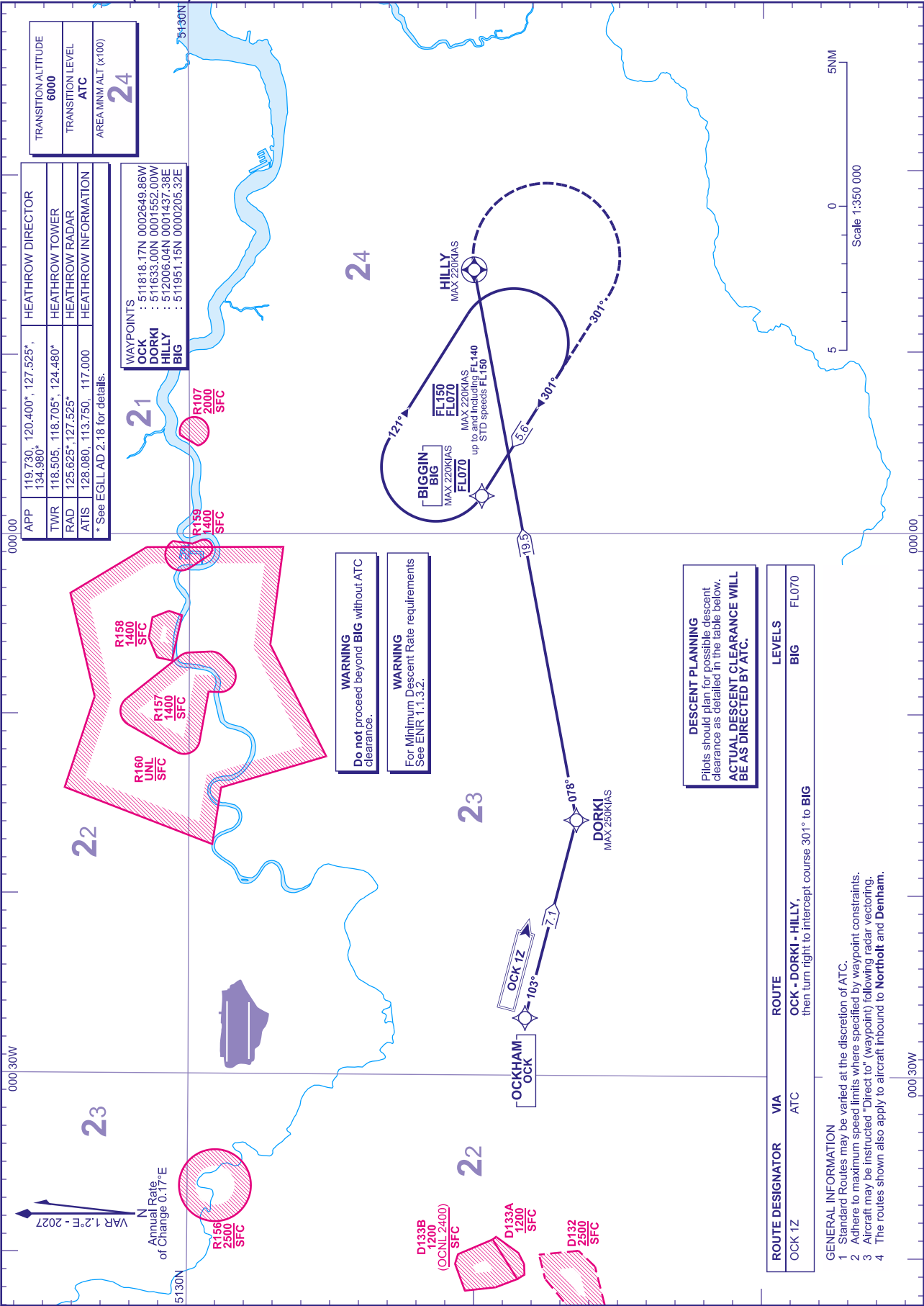


RNAV5 (DME/DME or GNSS)
STANDARD ARRIVAL CHART -
INSTRUMENT (STAR) - ICAO

DISTANCES IN NAUTICAL MILES
TRACKS ARE MAGNETIC
ALTITUDES AND ELEVATIONS ARE IN FEET

LONDON HEATHROW
OCK 1Z



APP	119.730, 120.400°, 127.525°	HEATHROW DIRECTOR
TWR	118.505, 118.705°, 124.480°	HEATHROW TOWER
RAD	125.625°, 127.525°	HEATHROW RADAR
ATIS	128.080, 113.750, 117.000	HEATHROW INFORMATION
* See EGLL AD 2.18 for details.		

TRANSITION ALTITUDE	6000
TRANSITION LEVEL	ATC
AREA MNM ALT (x100)	24

WAYPOINTS	511818.17N 0002649.86W
OCK	511633.00N 0001552.00W
DORKI	512006.04N 0001437.38E
HILLY	511951.15N 0000205.32E
BIG	

DO NOT PROCEED BEYOND BIG WITHOUT ATC CLEARANCE.
WARNING
For Minimum Descent Rate requirements See ENR 1.1.3.2.

DESCENT PLANNING
Pilots should plan for possible descent clearance as detailed in the table below.
ACTUAL DESCENT CLEARANCE WILL BE AS DIRECTED BY ATC.

ROUTE DESIGNATOR	VIA	ROUTE	LEVELS
OCK 1Z	ATC	OCK - DORKI - HILLY, then turn right to intercept course 301° to BIG	BIG FL070

- GENERAL INFORMATION
- Standard Routes may be varied at the discretion of ATC.
 - Adhere to maximum speed limits where specified by waypoint constraints.
 - Aircraft may be instructed "Direct to" (waypoint) following radar vectoring.
 - The routes shown also apply to aircraft inbound to Northolt and Denham.

OCKHAM	OCK	OCK 1Z	103°	7.1	018°	DORKI	MAX 250KIAS
--------	-----	--------	------	-----	------	-------	-------------

D133B	1200	(OCNL 2400)	SFC
D133A	1200	SFC	
D132	2500	SFC	

R156	2500	SFC
R158	1400	SFC
R157	1400	SFC
R160	UNCL	SFC
R107	2000	SFC
R130	1400	SFC

Scale 1:350 000
5 0 5 NM